

# AEROTEX<sup>®</sup>

*ceiling system*



✉ [info@aerotexceiling.com](mailto:info@aerotexceiling.com)

www [www.aerotexceiling.com](http://www.aerotexceiling.com)  
[www.aerotex.in](http://www.aerotex.in)



*Build Something New*



## CEILING & WALL PRODUCT

### ABOUT US

Aerotex has been one of the leading company of Modular Ceiling System for decades, and we offers premium quality of ceiling and wall panel material for commercial and residential sectors. The Company head office located at Mumbai, Maharashtra. We are Market leader with our product line PVC Gypsum, PVC Ceiling & Panel T Grids System, and Mineral Fiber and Metal Ceiling Tiles. We are committed to our clients provide a lower rate Aerotex have a professional attitude which has us to establish a long relationship with our Distributors Dealer, Contractor, Architect and Builder Developers. Aerotex is consistently striving to increase its market share through offering, economical, attractive designed, innovative with quality and environmentally safe products. We are present in almost all the categories of ceiling and panel. Aerotex ceiling are highly reliable, durable and cost effective.

### Vision

We Believe that we are the face of india (Aerotex), we work hard every day to MAKE INDIA Aerotex the world's most respected manufacturing Brand.

### Mission

It is our Passion & Dedication to Manufacture & Deliver the most innovative Aerotex False Ceiling & Acoustic Products tht Enables us to Become a better company to ourselves.

**"We are dedicated to the highest levels of customer satisfaction and quality in everything we do"**

# PVC GYPSUM CEILING TILES

Aerotex Laminated PVC Gypsum tiles are made of incombustible gypsum board, PVC facing as well as aluminum foil backing. It is ideal indoor decorative minerals especially used in areas requiring clean, dust free environment.

The aluminum foil backing has thermal insulation properties while the PVC facing provide you various choices with different designs like 154, 975, 569, 996, 238, 238G

## Features:

- 1) Easy to clean
- 2) Vinyl finish of panel
- 3) Seals out moisture, bacteria, dirt and odors.

## Benefits:

- 1) Contemporary designs and patterns To suit your ambiance.
- 2) High light reflection range = 75%
- 3) Moisture resistance excellent performance in humid conditions.
- 4) Good acoustic properties reduce noise In large areas.
- 5) Easy to clean hard washable surface that resists stains and abuse.
- 6) Aerotex Laminated PVC Easy to install in T-Grid system.





## **Features and Characteristics**

- 1. Use the high quality plaster board for raw material, high strength, anti - sinking, environmental protection.**
- 2. Elegant appearance, Design and color is novel. numerous in variety, discoloration, without color.**
- 3. Light, Fire-Proof, Flame Retardant, Sound insulation, Heat preservation.**
- 4. The front in PVC Film, the back is aluminum foil, all around is wrapped with tape, moisture-proof, fire-**

## **Specification**

- 1) Size 595mm X 595mm**
- 2) Thickness : 7mm, 8mm, 9mm**



## PVC GYPSUM DESIGN



**975**



**154**



**569**



**996**



**238**



**238G**



# MINERAL FIBRE CEILING TILES

## Features and Characteristics

Acoustic ceilings are beneficial because they are highly light reflective. They allow more light to reflect back into the room, saving money in utility costs. You can choose which panel you desire based on the level of humidity resistance, reflectivity and fire resistance

1. Low emitting material
2. Cost economical with good acoustics
3. Reliable with proven performance
4. Non directional visual reduces installation time and scrap
5. Light weight, Easy to transport

## SPECIFICATIONS

Material  
Surface finish  
Colour  
NRC

Sizes

Light reflectance  
Surface burning characteristics  
Sag resistance

Wet formed mineral fiber  
Factory applied vinyl latex paint

White

Minimum 50% (Square edge),

Minimum 55% (Tegular/micro edge) Maximum 90%

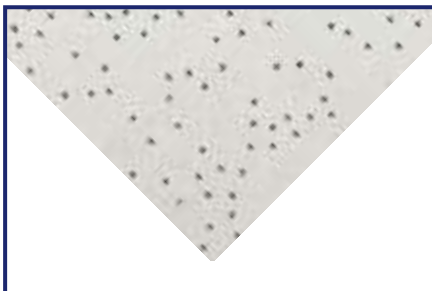
595mm X 595mm X 12mm Square edge,

595mm X 595mm X 15mm Tegular or Micro edge

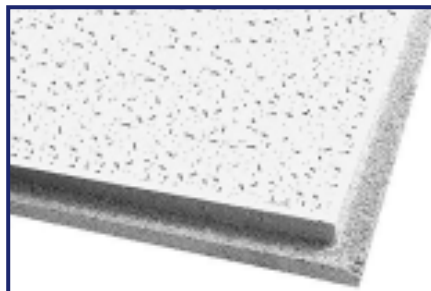
Minimum 83% Maximum 90%

Class A1 Gb8624 A Grade.

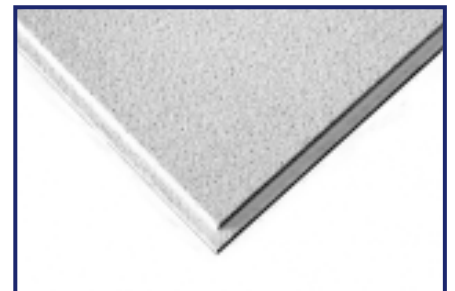
Appropriate for high humidity interior applications upto 80% (Square edge), upto 85% (Tegular/Micro edge) relative humidity, temperature upto 40° c no visible sag.



**Square**

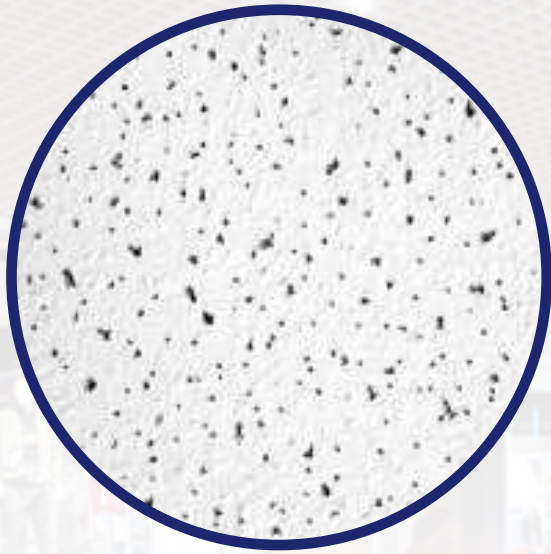


**Tegular**



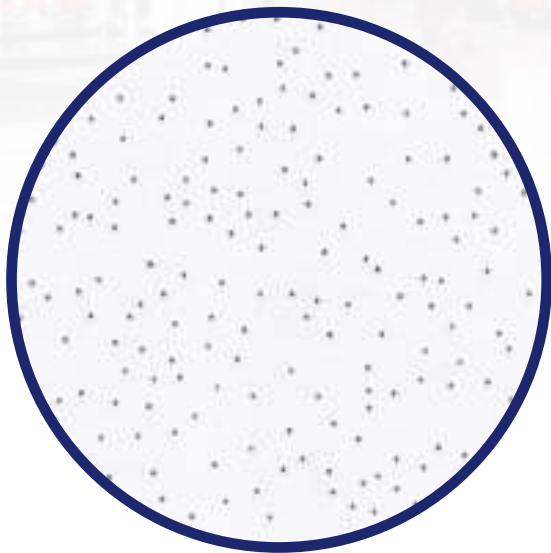
**Micro Look**

# MINERAL FIBER DESIGN



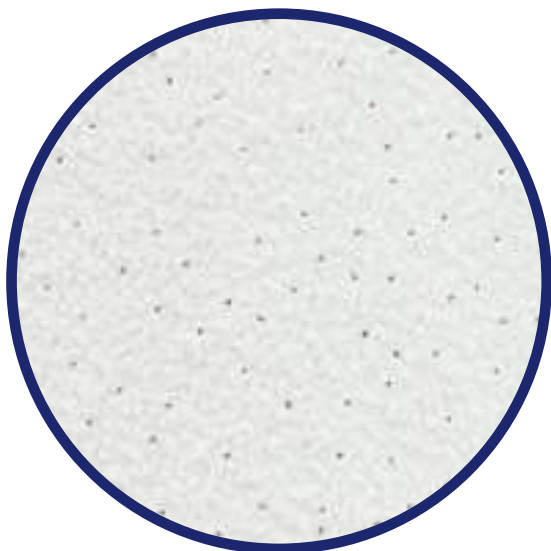
## Fine Touch

Mineral fiber tile is made from natural or synthetic mineral, including fiberglass, ceramic fiber and stone wool. Industrial applications of mineral wool include thermal insulation (as both structural insulation and pipe insulation), filtration, soundproofing, and germination of seedling.



## Star Elite

Star Elite combines Random Fine and coarse preformation to give Fresh, clean and aesthetic look, light in weight and easy to cut. Eco-Friendly and Biodegradable. It is widely used in indoor decoration industry, especially for first-class building such as restaurant, large department stores, office & buildings etc.



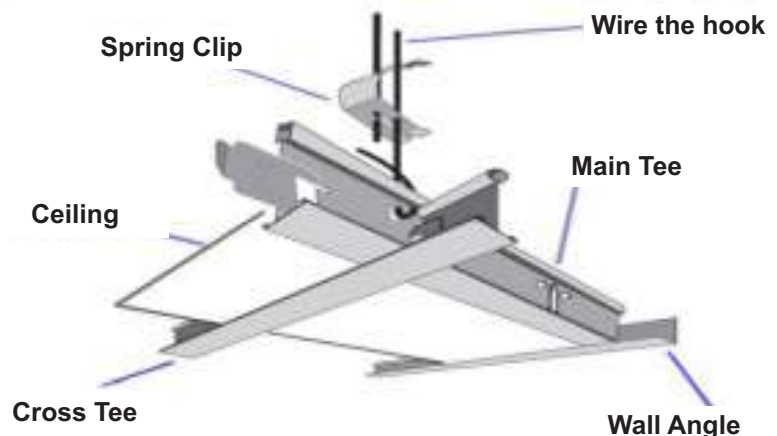
## Sand Supreme

Sand textured mineral ceiling are low price and high quality ceiling materials. Sand texture mineral fiber ceiling is a kind of high-grade construction decoration material. Being sound-adsorbing, fire proof, warm-keeping, energy-saving and heat-insulating, it is widely used in indoor decoration industry, especially for the first-class building such as restaurants, large departmental store, offices buildings etc.

# CEILING TEE GRIDS



1. Hot-dip galvanized and precoated strip steel strip, rust and corrosion free ceiling, high strength.
2. The processing accuracy, high appearance brilliant.
3. Human nature design, easy installation, time saving.
4. Improved, easier to install.
5. Works with any tiles of size 595 X 595 mm.
6. Appropriate corrosion resistance for interior environments
7. Unique designs in offices, hotels, retail space, schools, entertainment facilities, controlled environment facilities, semiconductor, pharmaceutical, aerospace, clean manufacturing areas, healthcare, food processing and precision instrument assembly rooms.
8. Eco-friendly.



## SPECIFICATION 24MM T-GRID

Main Runner Size	: 32mm X 24mm X 3000mm X 0.3mm
Cross T Size	: 26mm X 24mm X 1200mm X 0.3mm : 26mm X 24mm X 600mm X 0.3mm
Material	: High quality hot dipped Galvanized Iron Sheet



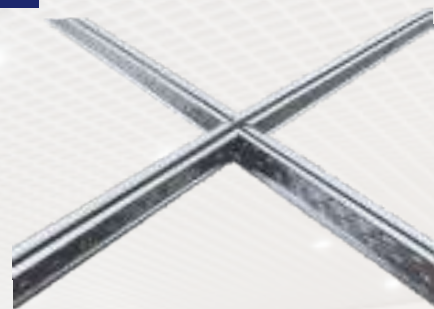


## Specifications Of 15mm Center White/Black

**Main Runner** : 32mm X 15mm X 3000mm X 0.3mm

**Cross T** : 32mm X 15mm X 1200mm  
: 32mm X 15mm X 600mm X 0.3mm

**Material** : High quality hot dipped Galvanized Iron Sheet

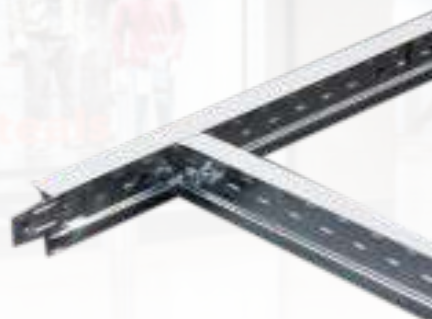


## Specifications Of 15mm Plain T-Grid

**Main Runner Size** : 32mm X 15mm X 3000mm X 0.3mm

**Cross T** : 32mm X 15mm X 1200mm  
: 32mm X 15mm X 600mm X 0.3mm

**Material** : High quality hot dipped Galvanized Iron Sheet.



## Specifications Of 15mm Silhoutte T-Grid

**Main Runner Size** : 32mm X 15mm X 3000mm X 0.3mm

**Cross T Sections** : 32mm X 15mm X 1200mm  
: 32mm X 15mm X 600mm

**Material** : High quality hot dipped Galvanized Iron Sheet



## Specifications Of Wall Angle

**Size** : 20mm X 20mm X 3050mm X 0.40mm  
: 15mm X 20mm X 3050mm X 0.40mm



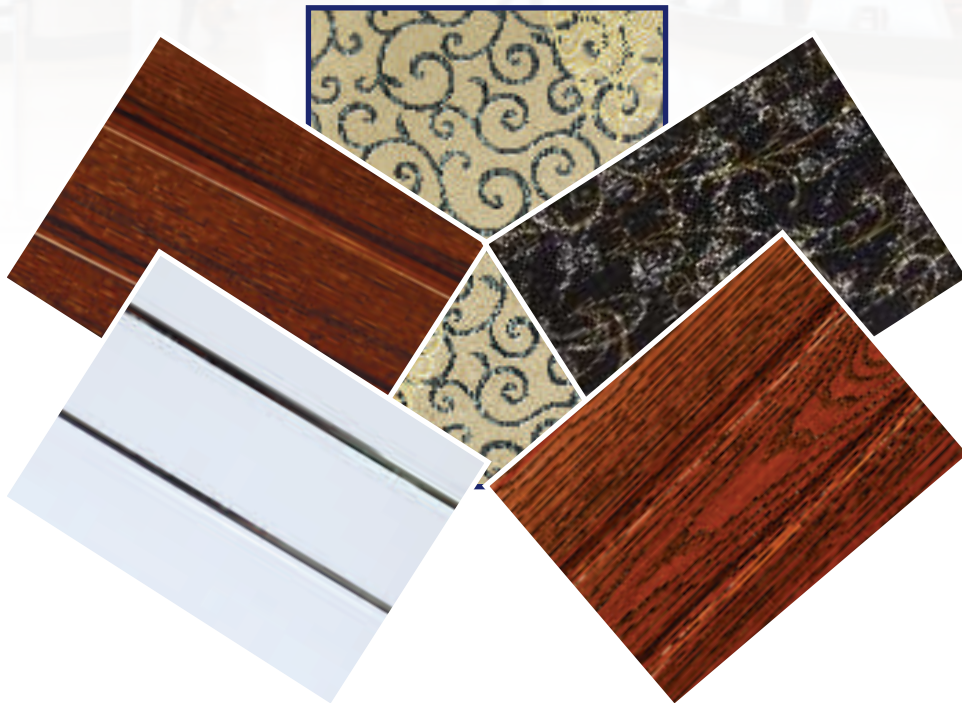
# PVC PANEL

## Features and Characteristics

1. Raw material : PVC Resin & Calcium Powder.
2. Surface treatment : Mat, Glossy Printing, Hot Stamping / Transfer film printing, Laminated.
3. Features : The variety of colors and patterns, High Intensity, Resist erosion, Anti Aging, Fire-Proof, Water Proof, Environmental Friendly, Easy setting and Cleaning.
4. Application : Bathroom, Kitchen, Dinning Room, Living Room, Shop, Commercial Buildings, Hospital, School, Bar, Hotel, Restaurant, etc. for indoor wall & ceiling decoration.

## Specifications

Size	: 10ft or 12ft X 10" or 12"
Thickness	: 9mm / 8mm / 7mm
Weight per M2	: 3Kg / 2.85Kg / 2.6Kg
PVC Content	: 45% / 40%





## TWO GROOVE WOODEN LAMINATED PANEL

**Size** : 10ft or 12ft X 12 inch  
**Thickness** : 9mm



**ACS 104**



**ACS 106**



**ACS 107**



**ACS 080**



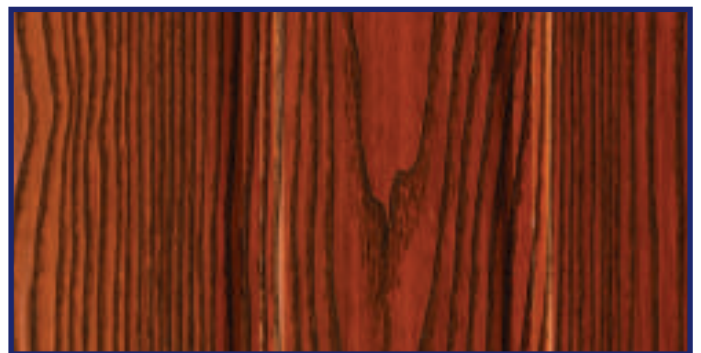
**ACS 102**



**ACS 090**



**ACS 105**



**ACS 082**





**ACS 078**



**ACS 077**



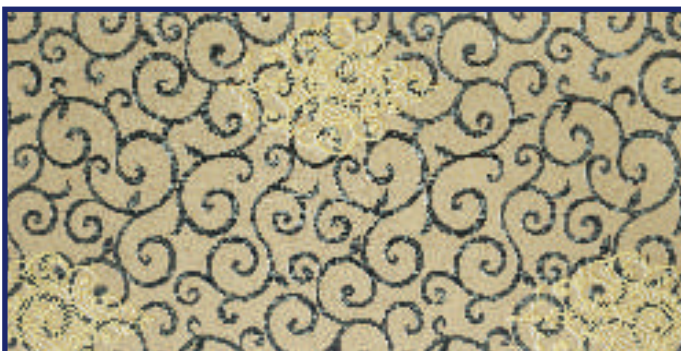
**ACS 125**



**ACS 083**

## **WOODEN LAMINATED FLAT PANEL**

**Size : 10ft X 10 inch**  
**Thickness : 8mm**



**ACS 153**



**ACS 154**



**ACS 115**



**ACS 151**



**ACS 152**



**ACS 092**



**ACS 108**



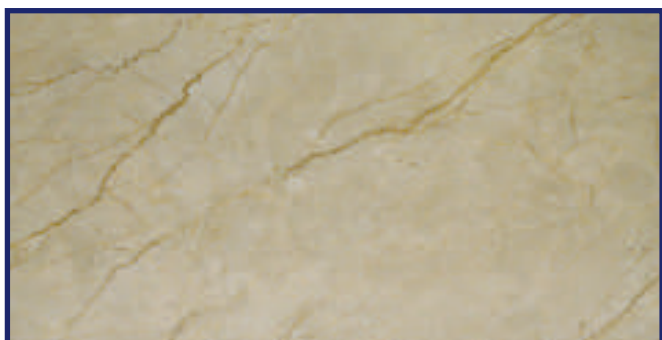
**ACS 109**



**ACS 091**



**ACS 155**



**ACS 157**



**ACS 176**

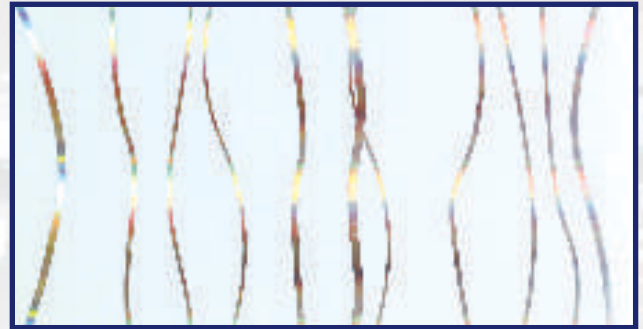


# HOT STAMPING & PRINTING PANEL

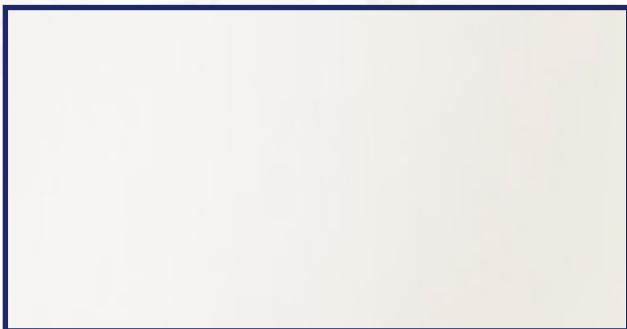
**Size** : 10ft X 10 inch  
**Thickness** : 7mm



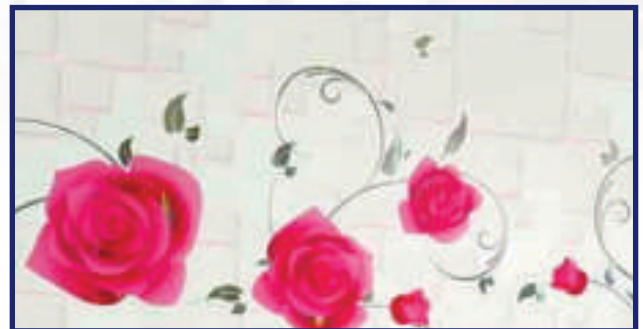
**ACS 101**



**ACS 142**



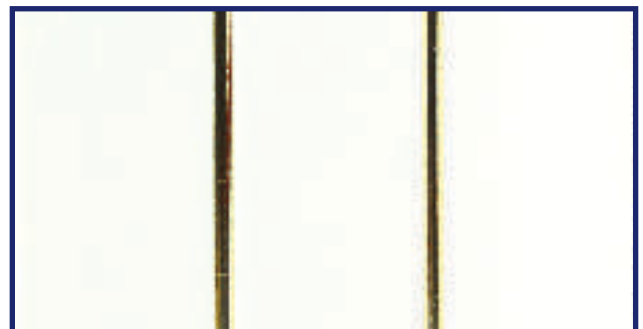
**ACS 093**



**ACS 116**



**ACS 140**



**ACS 101G**



**ACS 141**



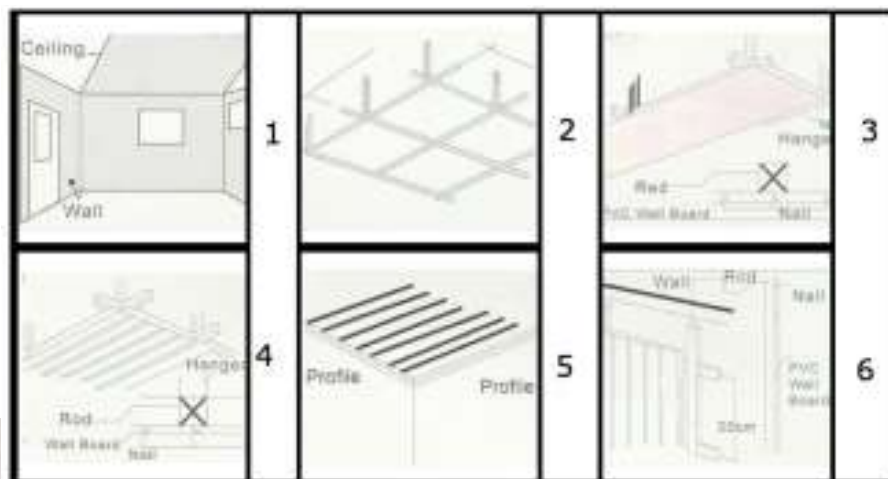
**ACS 112**



# PVC CLIP



## INSTALLATION



## PVC CEILING TILES

**Size** : 595mm X 595mm

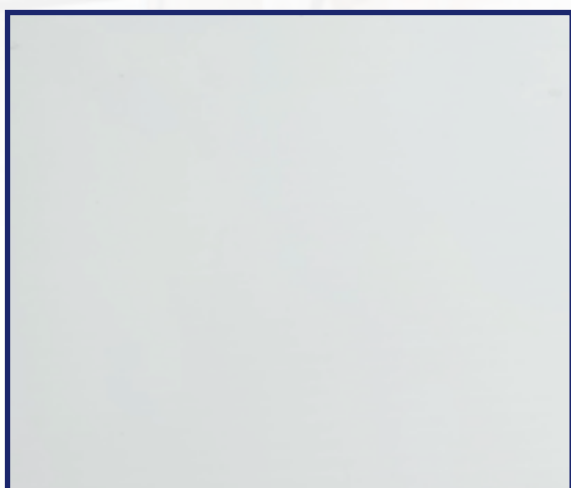
**Thickness** : 7mm



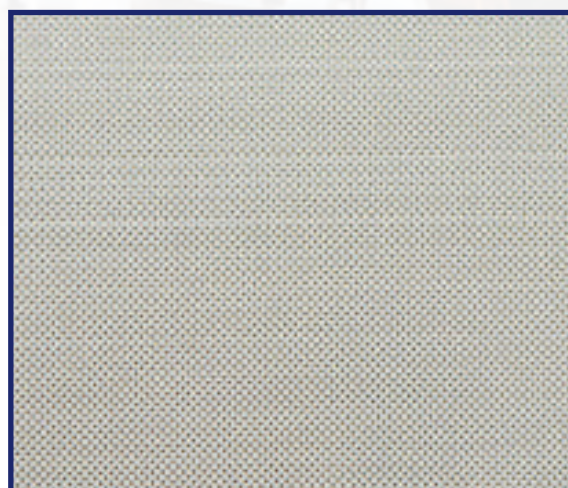
**ACS 202**



**ACS 203**



**ACS 200**



**ACS 225**



**ACS 226**



**ACS 201**



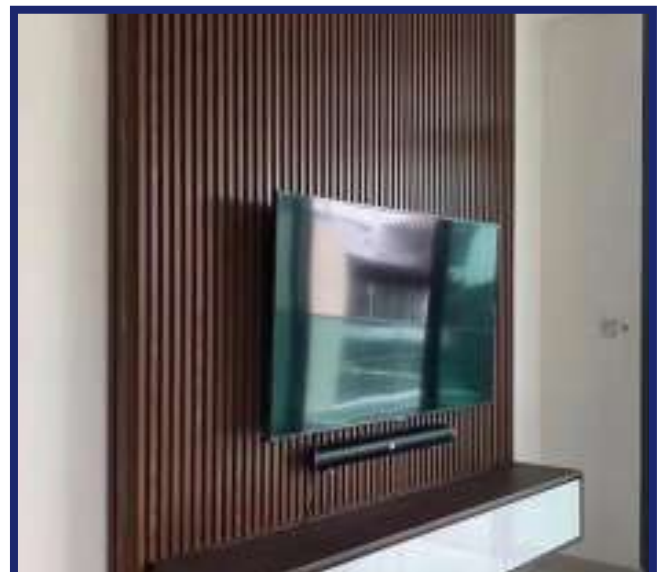
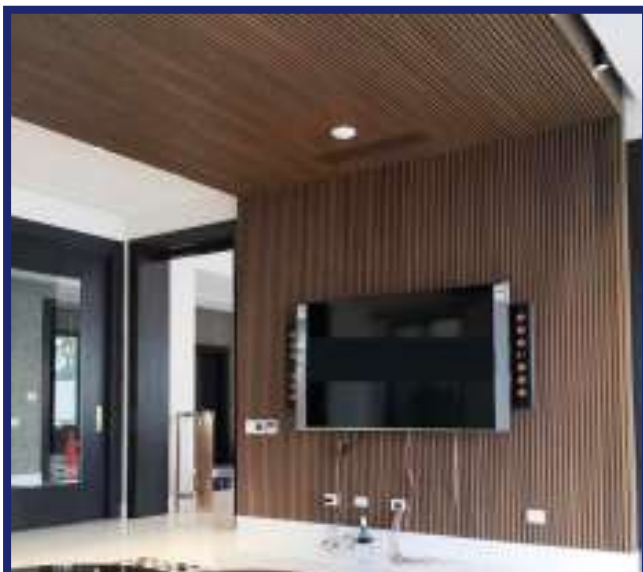
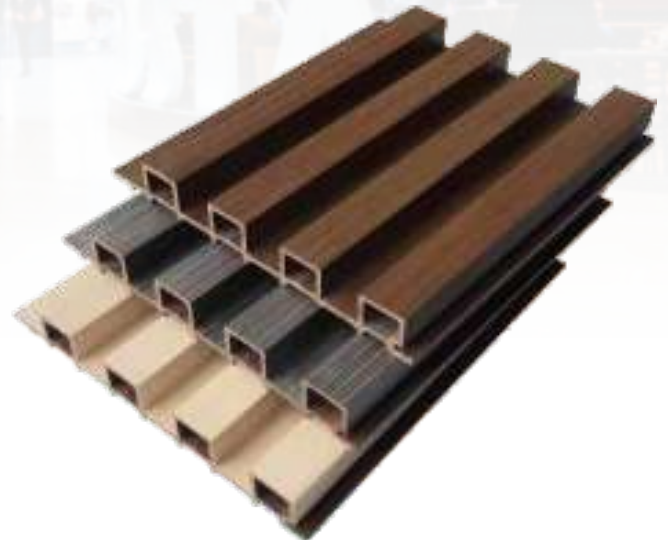
# WPC PANEL

## Features and Characteristics

1. Raw material : PVC Resin & Calcium Powder.
2. Surface treatment : Laminated.
3. Fire Proof, High Strength, Environmental-friendly Easy installation Modern styles
4. Application : Bathroom, Kitchen, Dining Room, Living Room, Shop, Commercial Buildings, Hospital, School, Bar, Hotel, Restaurant, etc. for indoor wall & ceiling decoration.

## Specifications

Size	: 2950mm X 160mm
Thickness	: 15mm / 18mm / 25mm
Weight per M2	: 5.5Kg / 6.5Kg / 7.5Kg
PVC Content	: 50% / 60%





## WPC PANEL DESIGN



**ACS 701**



**ACS 707**



**ACS 704**



**ACS 703**



**ACS 702**



**ACS 706**



**ACS 705**



**ACS 708**

# METAL CEILING TILES

## Features and Characteristics

Metal ceiling tiles have been used in construction for thousands of years. These tiles are better looking, more durable, and more versatile than plaster. They Add Strength to the Structure. They Are Moisture-Resistant They Can Be Painted to Match Any Décor They Are Easy to Install. They Are Fire-Resistant Because they are made of metal, these tiles also have higher resistance to fire, making them safer.

## SPECIFICATIONS

Square edge

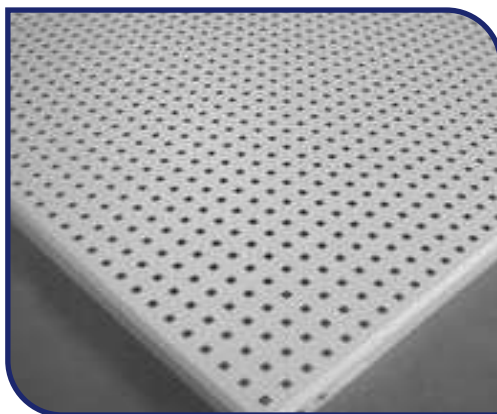
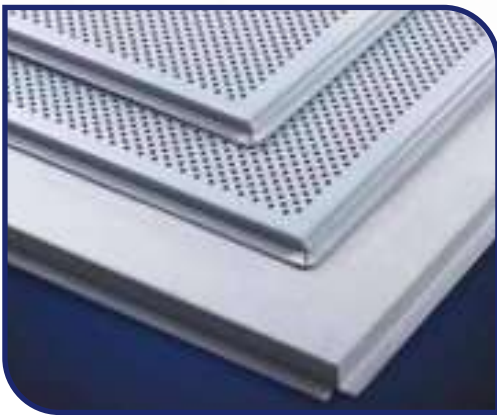
595mm X 595mm

Thickness : 0.4/0.5mm/0.6mm

Galvanized Steel : 0.4mm / 0.45mm / 0.5mm

Exposed T Grid System (Lay-in) in 24mm and 15mm T Grids

Concealed Grid System (Clip-in) 'V' profile.





# LAY IN METAL CEILING



## APPLICATIONS

- Airport
- Cinema
- Exhibition Centre
- Hotel
- Office Are
- Restaurant
- Shopping Mal
- Super Market
- Theatre

## Installation

- 1) Lay in tile
- 2) Main tee
- 3) Cross tee
- 4) Hanger

## FEATURES:

- Stability interlocking exposed grid.
- Easy lift-up access to void.
- Clean modular ceiling.
- Durable, washable, smooth polyester coating.
- Most popular sizes available from stock.
- Light and grilles easily intergrated.
- 1/2 hour fire rating assesment.
- Class 1 and Class 0 Surface spread of flame.





# CLIP IN METAL CEILING



## STANDARD COLOURS

Pure White, Cream

## SURFACE EFFECT

Powder coated tile

Coil coated tile

## Where do I use it?

High traffic areas and requiring was ability

- Transportation
- Healthcare
- Kitchens And Restroom
- Retail

**AEROTEX CLIP-IN-CEILING (Plain and Perforated)** The clip in system is probably the most widely used metal tile ceiling system. The tiles, manufactured to fine press tool tolerance are clipped into a concealed tee bar grid. Tiles are automatically leveled in the grid by special "Pip & stop" registers, which are pressed into the side flanges of the tiles during manufacture. Panel shall measure (2 x 2, 2 x 4) or custom size (\_\_\_x\_\_\_) with square edge detail, with 90-degree upturned legs, and formed to allow insertion of leaf springs in horizontal legs with pre-punched holes and clips in pre-punched slot and vertical legs, on opposing sides for securing panels to and concealing suspension grid.



### **CLIP IN METAL CEILING**

Aerotex Clip-in Ceiling (Plain and perforated) the clip in system is probably the most widely used metal tile ceiling system. The tile manufactured to fine press tool tolerance are clipped into a concealed tee bar grid. Tiles are automatically leveled in the grid by special "Pip & stop" registers, which are passed into the side flanges of the tiles during manufacture.



### **LAY IN METAL CEILING**

The term lay-in refers to tiles that have minimal tile face coverage by the supporting exposed grid as distinct from lay-on tiles where the face on the tile is fully visible.

### **PLANK METAL CEILING**

Aerotex Panels interlock tightly together and are virtually impossible to remove. Panels are Painted white and may be Perforated for acoustical performance when an acoustical batt is installed above.



### **OPEN CEILING**

Aerotex provide a most effective designs in open cell ceiling system.

### **BAFFLE CEILING**

Aerotex provides a most effective designs in Baffle Ceiling





# DRYWALL SCREW

## Product Description :

- 1) product name: drywall screws for metal
- 2) raw materials : high quality iron C1022
- 3) surface: bugle head philips back phosphated twin fast or coarse drywall screws
- 4) common size : **6x18, 6x25, 6x38**
- 5) package: usual 1000pcs/box with inner pvc bag, and then in standard export cartons.



# AEROTEX<sup>®</sup>

*ceiling system*

AEROTEX<sup>®</sup>

*ceiling system*

✉ [info@aerotexceiling.com](mailto:info@aerotexceiling.com)

www [www.aerotexceiling.com](http://www.aerotexceiling.com)  
[www.aerotex.in](http://www.aerotex.in)